

Crete 2010

# 13<sup>th</sup> SABRA Composing Tourney

An orthodox H#2 is required showing the creation and opening of a white line in the following manner:

- On the first black move, a black piece X captures a white piece which stands on line L.
- On the first white move, a white line-piece, which has the potential to control or move along line L, arrives at any square on this line.
- On the second black move, X moves.

Remarks:

- Following the opening of the white line (as described above) the line may still be masked by white and/or black pieces.
- Pawns are allowed as thematic pieces.

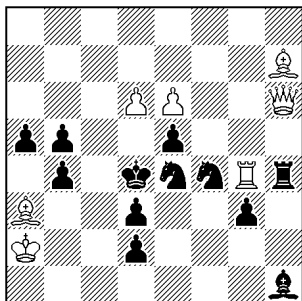
**Judge:** Menachem Witztum

**Prize:** 1 bottle of **SABRA** - the liqueur of Israel for your enjoyment.

**Entries** should be submitted to Paz Einat until Wednesday 20/10/2010 at 19:00.

## Examples

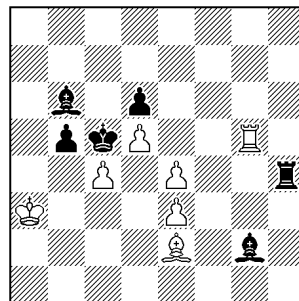
**Menachem Witztum**



h#2 b) ♖a3 (C+) (7+12)

- a) 1.Sxe6 Bg8 2.S6c5 Bb2#  
b) 1.Sxd6 Qf8 2.Sc4 Rxd3#

**Menachem Witztum**



h#2 b) ♜b5↔♙c4 (C+) (7+6)

- a) 1.Rxe4 Rg4 2.Rd4 exd4#  
b) 1.Bxe4 Bf3 2.Bxd5 Rxd5#