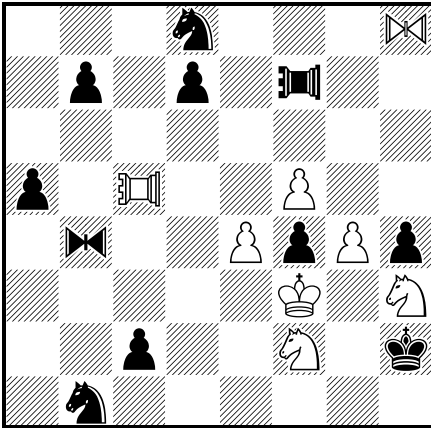




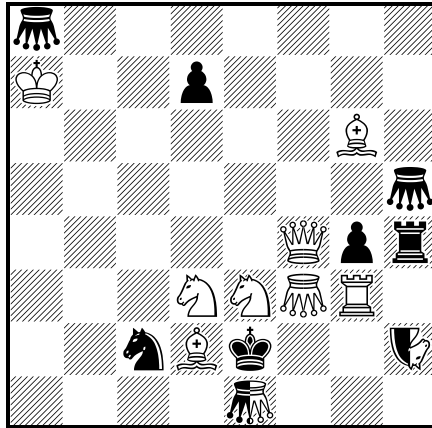
53<sup>rd</sup> World Congress of Chess Composition  
 Open Fairy Solving Contest, Crete, 20 October 2010  
 Time allowed: 2 hours and 15 minutes

N° 1



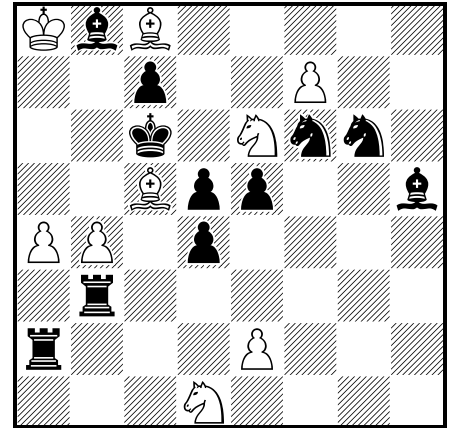
♠2 (8+11) C+  
 ♖♗=Pao  
 ♘♙=Equihopper

N° 2



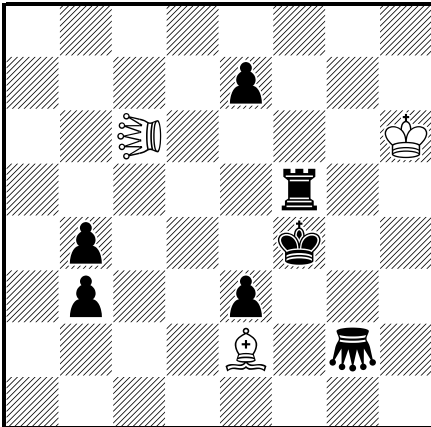
♠2 Circe (8+7+2) C+  
 ♖♗♘=Grasshopper  
 ♞=Nightrider

N° 3



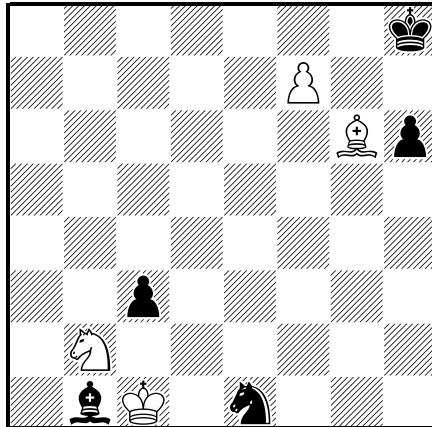
♠3 Anticirce (9+11) C+

N° 4



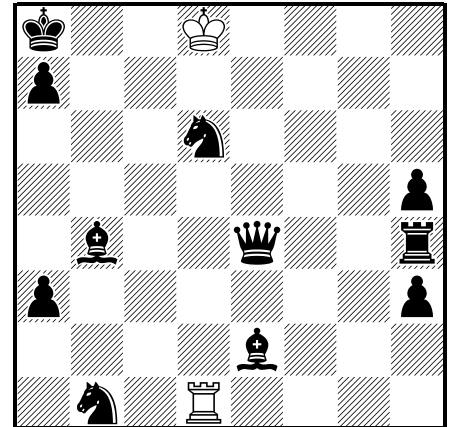
h♠3 3 solutions (3+7) C+  
 ♖=Grasshopper  
 ♗=Lion

N° 5



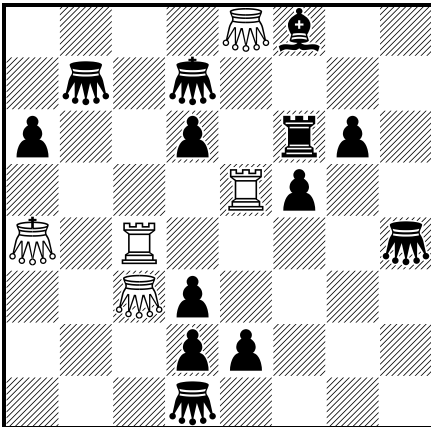
hs♠5 (4+5) C+

N° 6



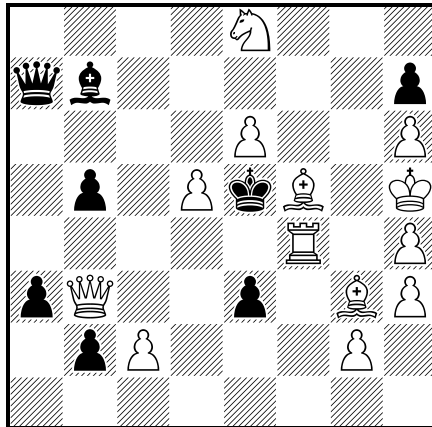
ser-h♠11 (2+11) C+

N° 7



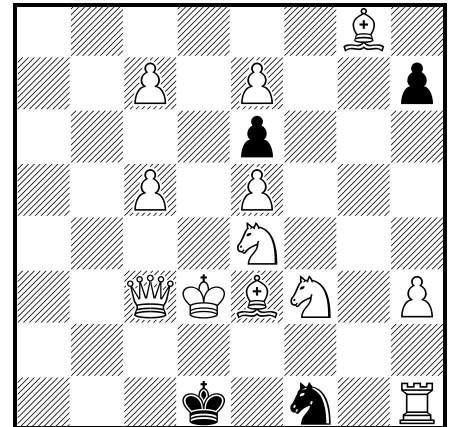
s♠2 (5+13) C+  
 Madrasi Rex Inclusive  
 a4, d7=Royal pieces  
 ♖♗=Grasshopper

N° 8



r♠3 (13+8) C+

N° 9



s♠6 Circe (12+4) C+