

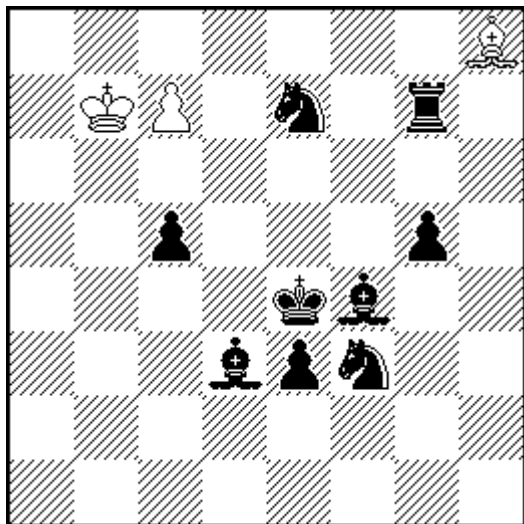
## 10<sup>th</sup> Moskovskaya Matreshka 2010

### Theme:

Helpmates in 2 moves. No fairy conditions or pieces are allowed. In the diagram position, there are two pieces between a black line-piece and the white king (half-pin, half-battery or masked battery). In the twin, these two pieces exchange their places. Pawns and black king may be used as thematic pieces.

**Open only to congress participants.**

### Example:



H#2      b) ♖c7 <-> ♞e7

- a) 1. Rg8 c8=Q 2.Sf5 Qc6#
- b) 1. Rg6 e8=B 2.Sd5 Bxg6#

**Closing date:** 20.10.2010 , 21.00 hrs.

**Judge:** Valery Gurov

**Prize:** 6 bottles of **Vodka from Moscow & souvenirs**