



50th WORLD CONGRESS OF CHESS COMPOSITION

Rhodes, Greece, 13-20 October 2007

8th Moskovskaya Matreshka Tourney

Judge: Valery Gurov (Russia)

Organisers

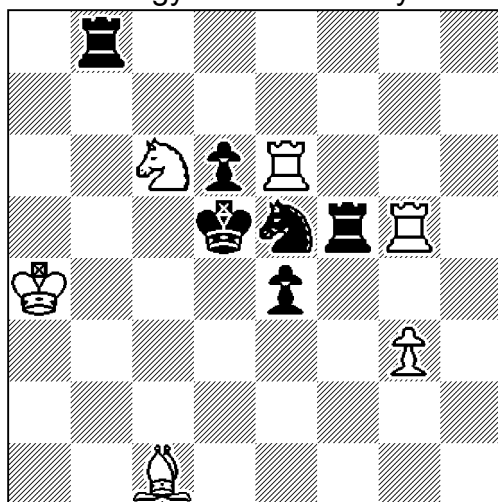
Valery Gurov and Vladimir Priklonsky

Theme

Helpmates in 2 moves are required. No fairy conditions or pieces are allowed. In the diagram position, there are two pieces between a white line-piece and the black king (half-pin, half-battery or masked battery). In the twin, these two pieces exchange their places. Pawns and the white king may be used as thematic pieces.

László Anyos

3 Pr Vízügyi Chess Club Ty 1986



h#2 b) ♘e5↔♖f5 (6+6)

a) 1.Sxc6 Txd6+ 2.Ke5 Lf4#

b) 1.Txe6 Sb4+ 2.Ke5 Lb2#

Five prizes in bottles of "Moskovskaya Matreshka" vodka and souvenirs.

Entries (computer-tested, printed or drawn on diagrams with full solution) to Valery Gurov by Wednesday, October 17, 21:00.