



# 50<sup>th</sup> WORLD CONGRESS OF CHESS COMPOSITION

## Rhodes, Greece, 13-20 October 2007

### French Champagne Tourney

#### Judge: Michel Caillaud

#### Theme

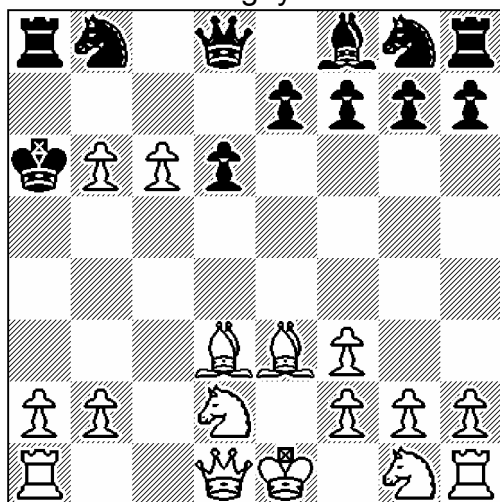
Any kind of retro with at least two en passant captures.

There will be two sections :

- a) proofgames
- b) any other kind of retros

Fairy conditions allowed (maximum two in one phase of a problem).

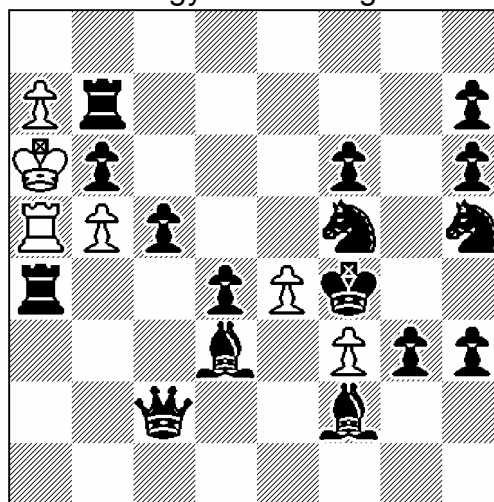
**Thierry Le Gleuher**  
2 Pr Messigny TT 1998



PG in 10.5

(16+12)

**Thomas R. Dawson**  
1 Pr Magyar Sakkvilág 1934



h#2

b) a2=a1

(6+16)

**Example I :** 1.d4 d6 2.Le3 Lg4 3.Sd2 Lf3 4.exf3 a6 5.Lxa6 Kd7 6.Ld3 Kc6  
7.c4 Kb6 8.d5+ c5 9.dxc6 e.p.+ Ka6 10.c5+ b5 11.cxb6 e.p.+

**Example II :** a) 1.dxe3 e.p. Txa4+ 2.Kg5 Tg4#  
b) 1.cxb3 e.p.+ Kxb6 2.Le2 Txf4#

Prizes in bottles of French champagne.

Maximum 3 entries per composer per section.  
(a problem with three co-authors counts as 0.33 entry per composer)

Entries to Michel Caillaud by Wednesday 17 October, 21:00.